

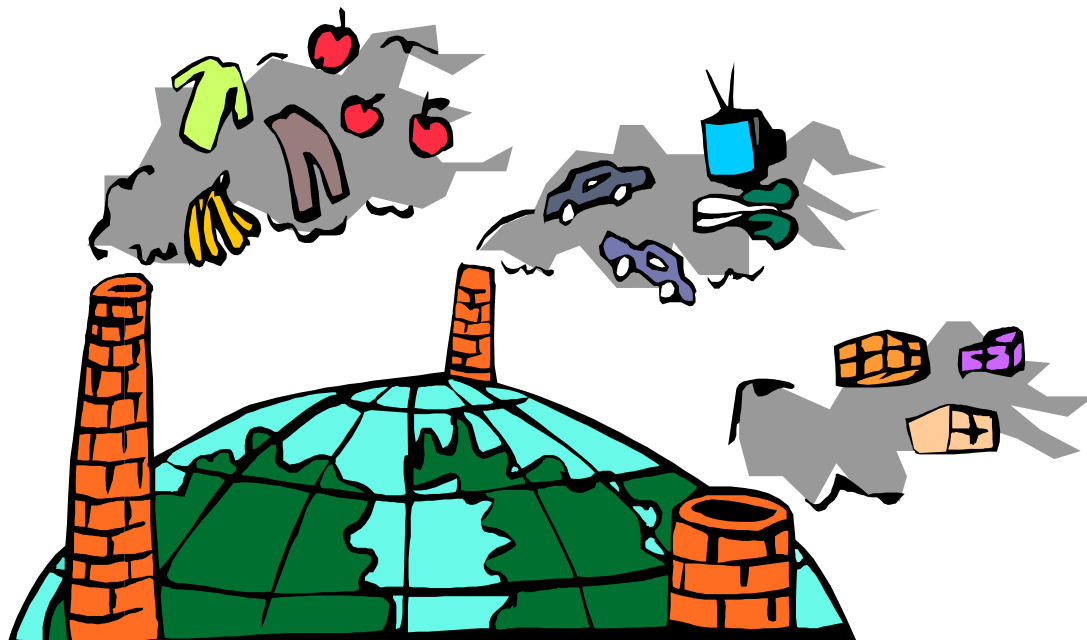
Environmental policy:

SKY-LIGHT's environmental policy applies to all the activities that are carried out at the company's address. SKY-LIGHT must observe and meet what acts and executive orders require both in the environmental and working environmental areas.

SKY-LIGHT regards environmental considerations a significant part of the company's obligations. In our daily work, we will make an effort to integrate the following environmental policy.

SKY-LIGHT will:

- Prevent and limit environmental pollution and ensure that continuous improvements of environmental conditions be carried out at the company
- As a minimum observe current environmental legislation and relevant statutory requirements as well as other provisions which SKY-LIGHT has endorsed.
- Continuously reduce environmental impacts by ensuring the best possible use of resources through a reduction of raw materials, energy consumption, waste volumes and emissions into the environment
- Influence our suppliers into delivering environmentally responsible raw materials, products and services
- Inform about and cooperate with customers, suppliers and authorities regarding environmental and safety conditions in as well as outside the company
- Always consider the best solution when purchasing new equipment, including new technology
- Integrate environmental policy and environmental management as important elements of all management functions
- Contribute to exchanging environmentally responsible technologies and management methods with regard to the company's environmental conditions.
- Prepare an annual environmental statement and dialogue openly with the public with regard to the company's environmental conditions
- Train and motivate all employees into acting in accordance with this environmental policy.



Version: 2010/2011

Michael Kristensen